

PUSHPA

AMRUTTULYA



**TO SERVE THE
BEST QUALITY TEA**



**ONLY 2.5 LACKS RS
COMPLETE SETUP**



2.5 LACKS RS SETUP



**Steel Bhatta
(Sigadi)**



Steel Sink



**Serving + Cash
Counter (5*2)**



**Main Board
3D (6*4)**



**Thermos
3**



**Cup
100**



**Pital Ganj
2**



Refrigerator

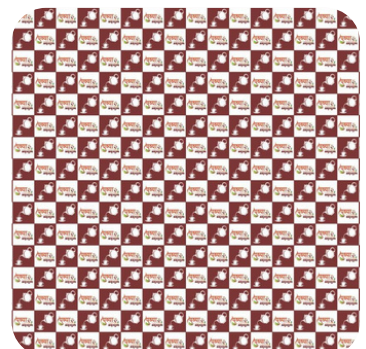
2.5 LACKS RS SETUP



**Small & Big
Chay Channi**



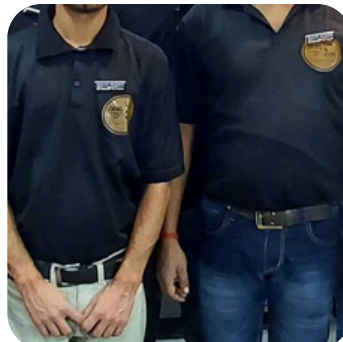
**Small & Big
Dustbin**



Wall Sticker



**LED Light
Menu Board**



**Uniform
2**



**Acrylic
Glass 10**



Napkins



**Billing
Machine**



**Kulhad
200**

2.5 LACKS RS SETUP



Coffee Shekar



Chay Masala



Chay Patti



Jaggery



**Chocolate
Serup 1**



**Coffee
2**



**Weight
Machine**



Timer



**Dish Wash
+ Gel**

Note : The images show are for illustration purposes only and may not be an exact representation of the product. Actual device may different from the image show.



GROSS PROFIT CALCULATION SHEET

<i>Company Provide Material</i>	<i>One Cup Price</i>	<i>Total Sale</i>	<i>Gross Profit 50%</i>
14,000 Cup Tea	10 Rs	1,40,000 Rs	70,000 Rs
600 Cup Coffee	25 Rs	15,000 Rs	7,500 Rs
Total		1,55,000 Rs	77,500 Rs

NOTE :

Total Investment : ₹ 2,50,000

Company Provides : ₹ 1,55,000 worth of Material

Gross Profit : ₹ 77,500 from the Material

Customer's Investment : Only ₹ 1,72,500 needed

This plan makes it easier for customers to start a Tea Franchise with less upfront cost.

PUSHPA

AMRUTTULYA

*India's Only Tea Franchise
Offering Following Benefits*

0

Franchise Fees



**No Chef / Cook
Required**



16 + Products



Pocket Friendly



**Average Google
Rating 4.4**

Presence in 8 States



PUSHPA

AMRUTTULYA



**Near Main Bus Stand
Nagpur, Maharashtra**



9766754705



Pushpa Amruttulya



Pushpa Amruttulya



pushpaamruttulya

